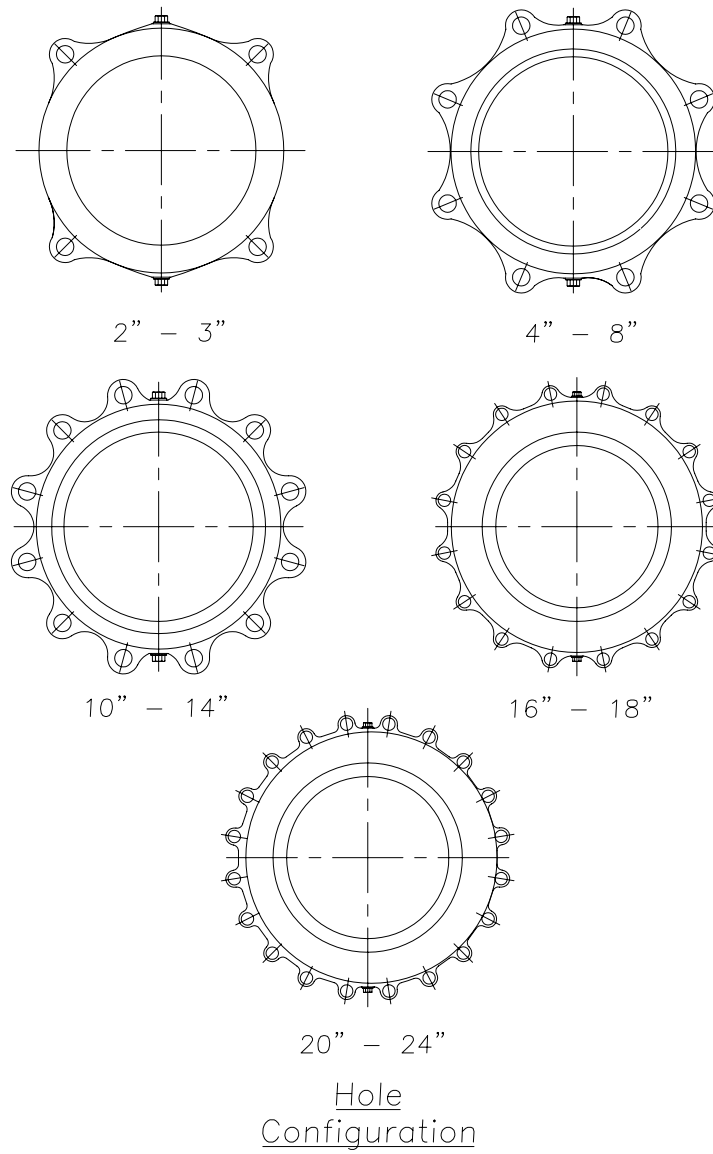
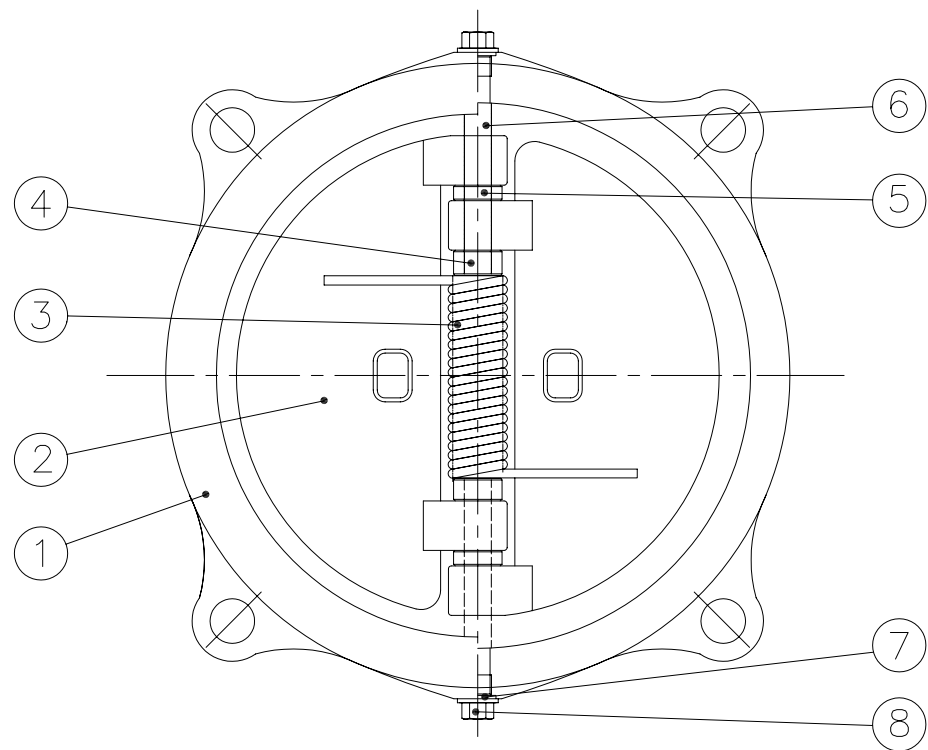
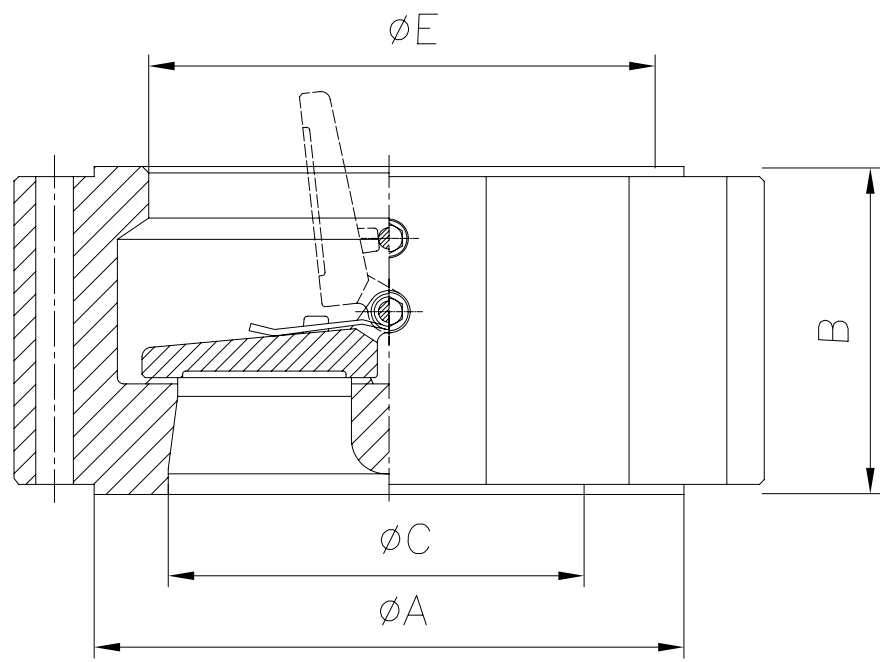


PRESSURE & TEMPERATURE TO ANSI B16.34; MATERIALS TO NACE MR-01-75 Latest Edition; HINGE/STOP PINS MUST BE VERTICAL FOR HORIZONTAL FLOW; LIFTING BOLTS SUPPLIED FOR VALVES 6" AND LARGER



8	STOP PIN	A182 F316
7	GASKET	A182 F316
6	HINGE PIN	A182 F316
5	BEARING	A182 F316
4	SPRING PLATE	A182 F316
3	SPRING	INCONEL X750
2	DISC	ASTM A351 CF8M
1	BODY	ASTM 216 WCB
	BODY SEAT	AS BODY + 316 OVERLAY
	PLATE SEAT	AS PLATE
NO.	Name	Material

NOTES	
1.	Body Seat Overlay available - AISI 316 or Stellite 6
2.	Plate Seat Overlay available - AISI 316 or Stellite 6
3.	

Size Inches	Dimensions (mm)			
	A	B	C	D
2"	104.78	60.33	-	57.15
2.5"	123.83	66.68	-	74.68
3"	136.53	73.03	50.80	86.87
4"	174.63	73.03	88.90	113.03
5"	196.85	85.73	0.00	149.23
6"	222.25	98.43	139.70	165.61
8"	279.40	127.00	171.45	206.50
10"	339.73	146.05	234.95	260.35
12"	409.58	180.98	260.35	300.23
14"	450.85	184.15	285.75	338.84
16"	514.35	190.50	331.80	387.35
18"	549.28	203.20	395.30	438.15
20"	606.43	219.08	438.15	487.43
24"	717.55	222.25	536.58	578.61

DRAWING TITLE:
 API 594 CAST STEEL CLASS 150
 WAFER LUGGED, RF, CHECK VALVES

CLIENT: -
 VENDOR PO REF: -
 EVC REF: -



ENGINEERING DATA

DESIGN CODE	API 594	TEST PRESSURES		
FACE TO FACE DIMENSIONS	API 594	BODY	29.4	Barg
ENDS FLANGES DIMENSIONS	ASME B16.5	SEAT	21.56	Barg
TESTING CODE	API 598			

REV	DATE	DESCRIPTION	BY	CHK	APP	SCALE:
						DRAWN
						CHECKED
						APPROVED
						DATE

CAD. No.	DRAWING NUMBER:	120028	REV
	AREA No.	FACILITY	TYPE
	SEQ. No.	SHT. No.	01